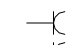
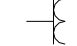



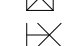
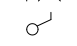
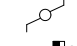



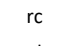
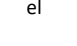


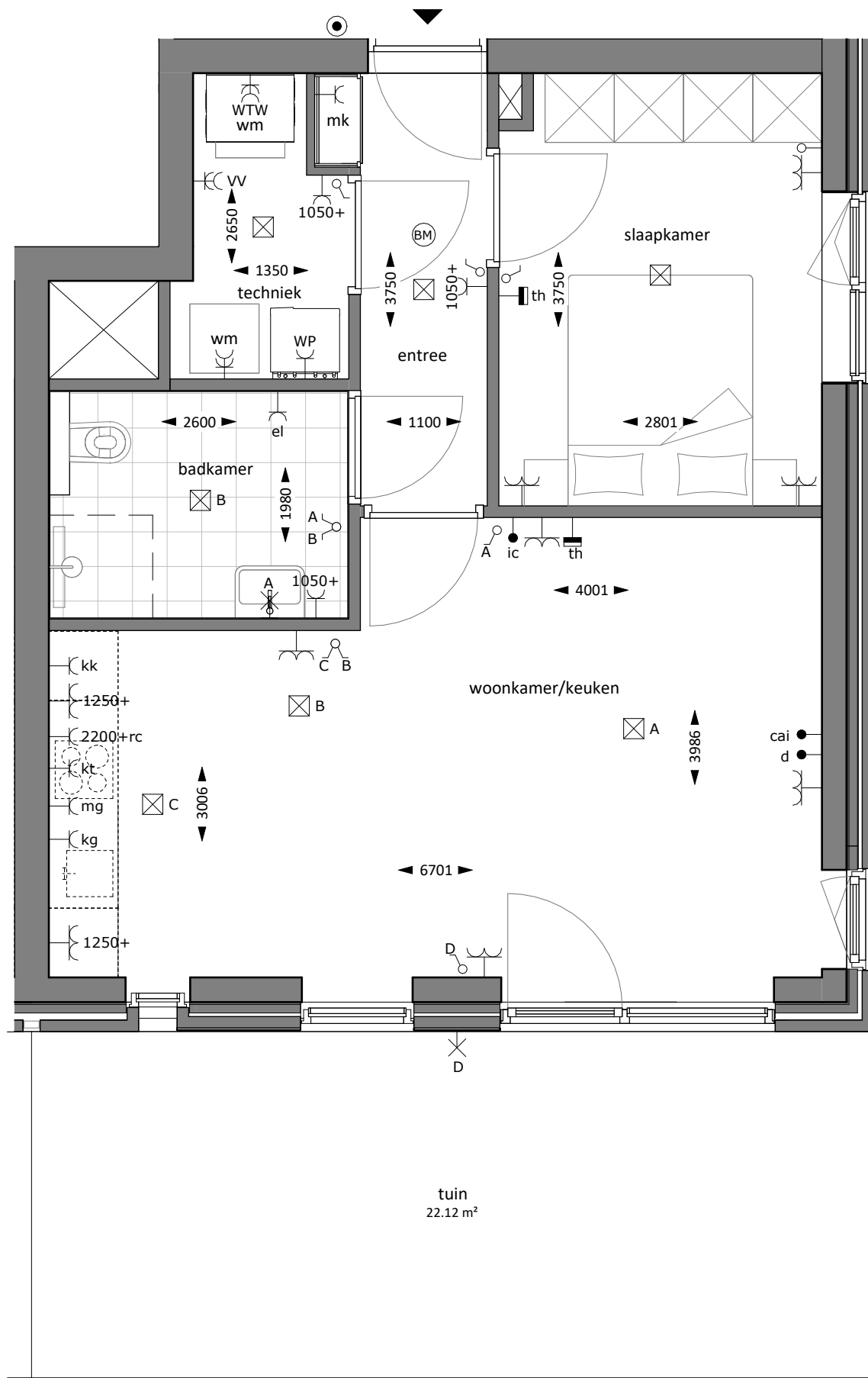
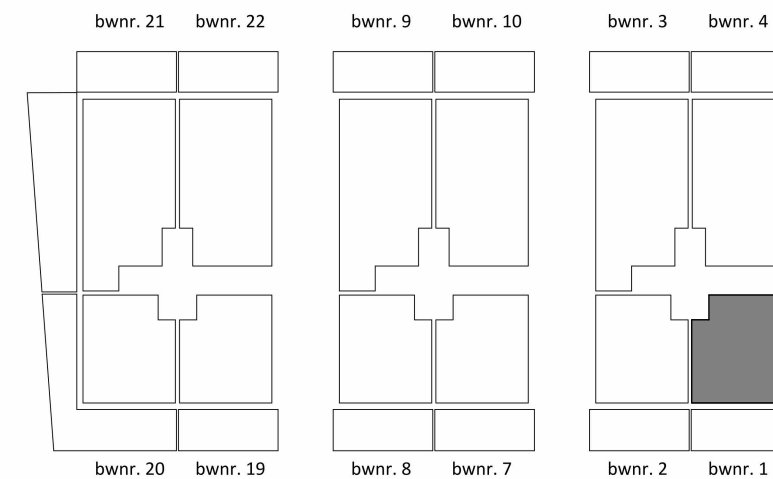


Renvooi elektra

-  enkele wandcontactdoos met randaarde
 -  dubbele wandcontactdoos hor. met randaarde
 -  dubbele wandcontactdoos ver. met randaarde
 -  aansluitpunt bedraad
 -  aansluitpunt loos
 -  centraaldoos
 -  wand lichteansluitpunt
 -  enkele schakelaar
 -  serie schakelaar
 -  wissel schakelaar
 -  Thermostaat
 -  beldrucker
 -  rookmelder
 -  data
 -  recirculatiekap
 -  elektrische radiator
-
- mg magnetron / oven
 - cai radio / televisie
 - ic intercom
 - kk koelkast
 - kg keukengroep
 - kt kooktoestel (t.b.v. elektrich koken)
 - wp warmtepomp
 - wtw warmte terugwin installatie
 - wa wasautomaat
 - wd wasdroger
 - vv vloer verwarming
- ALGEMEEN:
-elektra uitvoeren conform NEN1010
- montagehoogten t.o.v. bovenkant dekvloer:
(tenzij anders vermeld)
- wandcontactdozen 300+
 - schakelaars 1050+
 - aansluitpunten d+cai 300+



gebruiksoppervlakte: 49.07m²
buitenruimte: 22.12m²



BEGANE GROND



MAATVOERING IS NIET GESCHIKT VOOR
OPDRACHT AAN DERDEN



A3
1:50